



Tel: +86 166 9219 0701

E-mail: info@jiutaiendoscope.com

Address: Xinyuan Financial Square, Jingsan Road,
Zhengzhou City, Henan Province, China

Website: www.jiutaiendoscope.com



Website



**INDUSTRIAL NDT
EXPERT**

Zhengzhou Jiutai Technology Co., LTD

Using our technology to help world industry



CONTENTS

Zhengzhou Jiutai Technology Co., LTD

01 Company profile

About us	01
Company strength	03
Certificates	05
Development event	07

02 Products introduction

Pipe crawler Robot Camera Series	11
Pipe inspection camera series	27

03 Win-win cooperation

Business partner	41
Sales network	43

ABOUT US



Design



Create



Produce



Sale

Zhengzhou Jiutai Technology Co., Ltd. was founded in 2010, is a professional high-tech enterprises committed to NDT field(pipe camera,borescope,pipe crawler robot camera, thickness gauge,) R & D, production, sales and provide customized solutions for customers!Since Jiutai technology company established, the company has developed pipe inspection camera series, anti explosion camera, pipe camera series,borescope camera, CCTV pipe crawler robot camera series, wind turbine blade inspection robot camera,Magnetic crawler thickness measure robot camera series , etc.Welcome to visit our factory !

15⁺ Focus on R&D

20⁺ Related industry field

90⁺ National patent

Determine to become a world-class pipe inspection system supplier

Over the years, Jiutai Technology has developed and produced multiple series of products throughout Sinopec, petrochina, CNOOC, five power generation groups, some technical supervision departments, China Shipbuilding Industry, Sinochem Group, National Research Institute of Safety Production Technology and other well-known enterprises at home and abroad. The industry involves technical supervision, energy and power, petrochemical industry, ship construction, rail transit, food and medicine, municipal management, aerospace and military industry, scientific research institutes and many other fields.



Customer first
honest operation



Keeping improve
products quality



Create value to
customer



Excellent and efficient
staff team

COMPANY STRENGTH



*Professional manufacturer of
pipe inspection camera and crawler camera system*

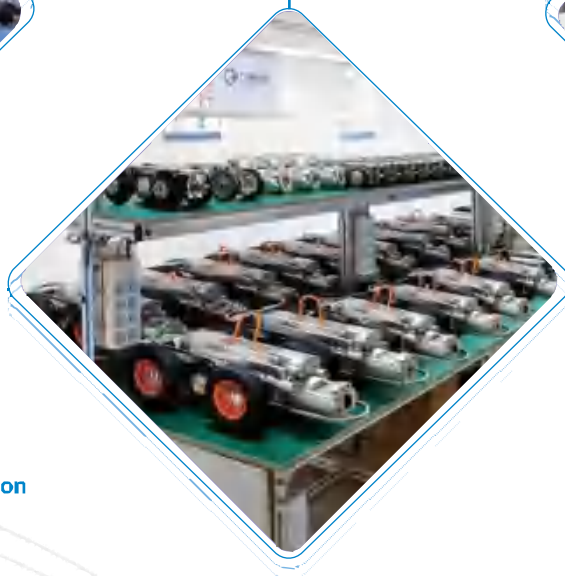


R & D, manufacturing,
production, sales in one.

**Technology R&D
Continuous Innovation**

**CCTV Pipe Inspection
Robot Camera**

4MGP
Electric Lifting Lens
Inspection Report



Suitable for Various
Pipe Diameter

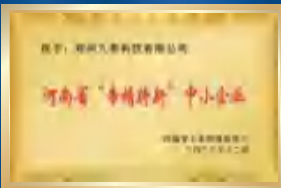
Strong compatibility

**First-class production
echnology and service**

High Quality
Competitive price
Best Service



CERTIFICATES



Using our technology to service world industry

- At the end of 2016, our company was awarded as a technology-oriented enterprise, and the CE and ISO certificates were successfully issued. During the same period, our company also applied for the registration of a number of software Copyrights, and was rated as a high-tech enterprise.
- In 2020, our company became the top technology enterprise in Henan Province.
- Up to now, we have applied for nearly 100 utility model patents and a number of invention patents.





DEVELOPMENT EVENTS



Committed to creating first-class production technology and service.

From China to the world,

We are moving towards a more diversified future.

... ..

2010

● Start up

Start-up Zhengzhou Jitai Technology Co., LTD.

2012

● Keep going

Officially launched the industrial inspection camera and crawling robot project research and development.

2014

● Innovation

Set up engineering technology research and development center.

2016

● Development

The company obtained CE and ISO certificates and was rated as a high-tech enterprise.

2018

● Leap

The company has reached comprehensive cooperation with China's five major power generation groups and State Grid Power Company.

2020

● Optimize

Overseas sales to more than 80+ countries. The company became to the Henan Province science and technology elite enterprise.

2022

● Strengthen

The CCTV municipal crawler has played an important role in the diversion of rain and sewage pipe network, completion acceptance, environmental supervision and so on.

2025

● Creation

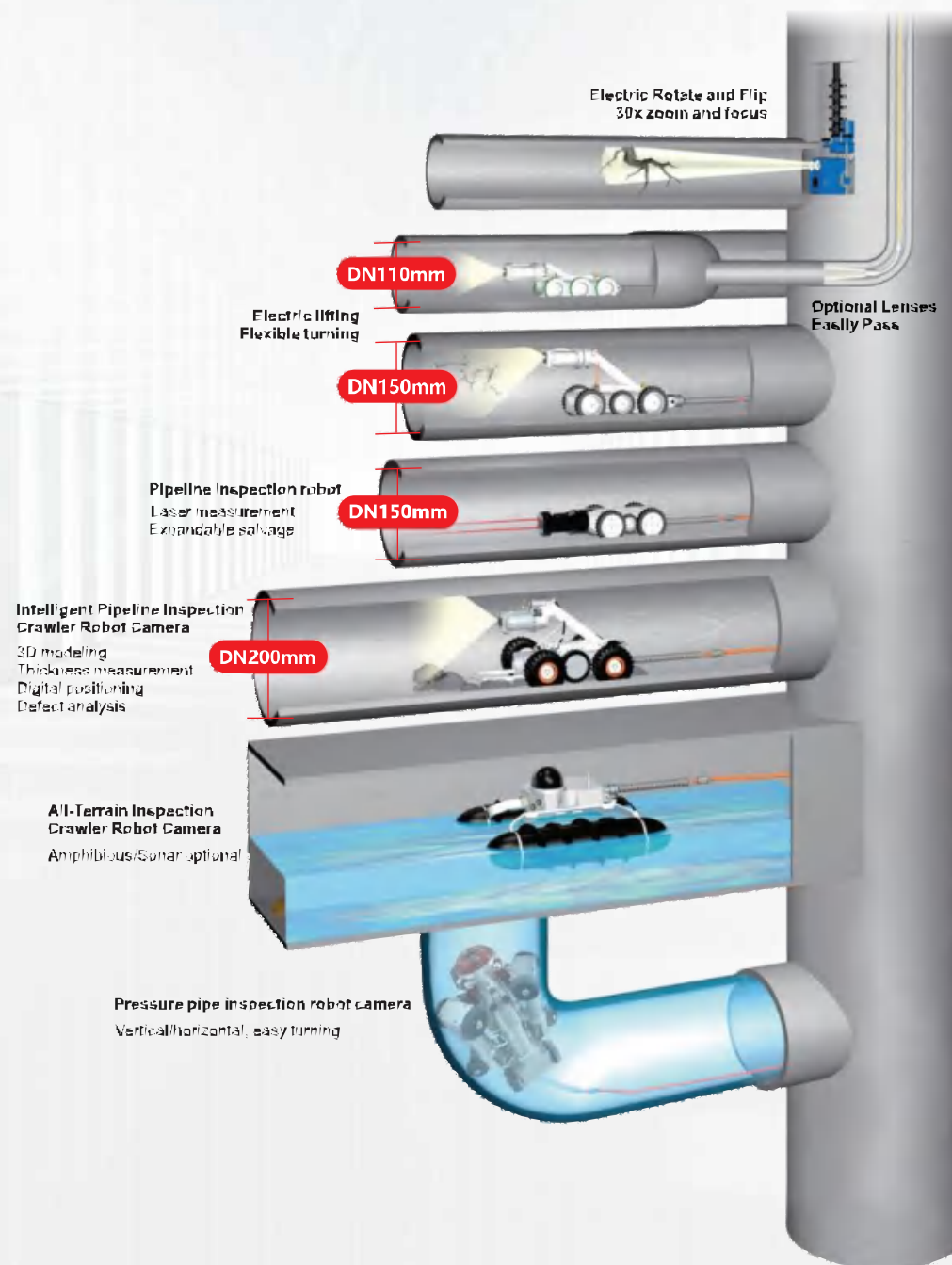
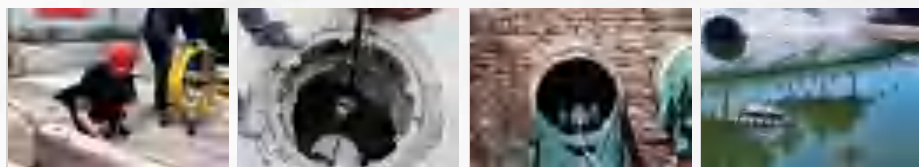
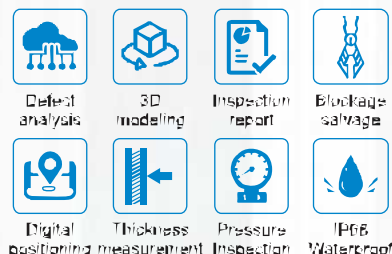
Accumulated more than 90 national patents, served 10000+ customers.

MUNICIPAL PIPE NETWORK TESTING SOLUTION



QCTV pipe crawler camera system is widely used in pipeline internal structure damage, deformation, blockage and underground pipe network discharge, such as: the culverts, tunnels, river silt, high water level complex conditions. QCTV Pipeline robot camera include the pipe crawler body camera, automatic electric wire harrow, tablet control, PTZ camera, 2/4MPG industrial pixel, generate real-time pipe inspection report. It has the advantages of strong obstacle crossing ability, efficient and durable, waterproof, wide detection range and so on. Very popular on the market and export all over the world.

Meet various inspection needs





GT108

CCTV Municipal Sewer Pipe Crawler Camera

GT108 Series Pipe Inspection Robot camera is a kind of CCTV pipeline crawler robot camera equipment with HD front and rear dual view images. Portable computer controller, auxiliary strong brightness and meter counter device, electric winch. Support video recording, defect capture, record defect location information inner the pipe and make professional pipeline inspection report.



Controller or tablet optional

HD PTZ camera

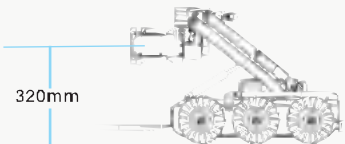
- 360° endless rotate, 220° flip.
- It adopts 2~4 MPG HD pixels to clearly restore details. Real-time transmission of HD images.
- 10 times zoom in and out, auto focusing.



Real-time transmission HD images

Electric Lifting Camera

Equipped with electric lifting platform, with 110mm wheel diameter, the height of the lens from the ground is 320mm.

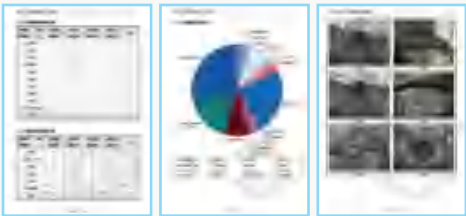


3 diameter wheels for choice



Report System

Built-in defect interpretation software, according to the actual working conditions, can automatically identify internal cracks, deformation, blockage, scaling, rupture and other defects, and generate real-time pipeline inspection report files, detailed analysis of internal pipeline inspection data, and support online editing.



Parameter

Screen	12 inch HD LCD screen	Resolution	2560*1600
Storage capacity	32G(Max. 1 TB)	Front Camera	360° rotate, 220° flip
Front Camera Pixel	2~4 MPG	Rear Camera Pixel	Megapixel
Front Camera Lux.	20*10000LUX	Rear Camera Lux.	20*10000LUX
Waterproof	IP68	Inspection length	100-300m (customized)
Pipe Dia.	200~3500mm	Winding mode	Auto/Manual

GT102A

Pipeline crawler camera

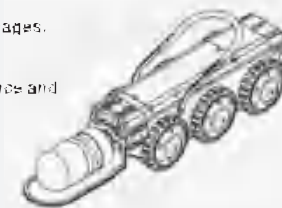
- 360° rotate/220° flip
- Electric focus
- Metal lens (optional)

GT102A series Sewer pipe crawler robot camera can replace manual entry into the pipeline through the joystick control crawl, turn and camera's rotation, flip, touch the button to focus, record, playback, etc., to provide timely and detailed image material evidence for inspection.



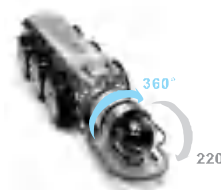
Advantages

- 360 degree no dead Angle inspection, 2MGP HD real-time inspection images.
- Front/rear dual lens, switch freely, Real-time reversing image.
- Equipped with count meter device to effectively record inspection distance and defect location.
- Laser measurement technology helps determine defect size.
- IP65 Waterproof, easily inspected in complex working conditions.
- Inspect length 100-150m optional, wide range of applications.



Multifunctional crawler body

Comprehensive inspection without dead ends

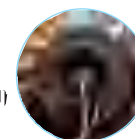


Suitable pipe diameter: DN120-800mm
Lens angle: 360°endless rotation/220°flip
Function: laser measurement/macro focusing

Metal lens Small crawler body Anti-collision and wear-resistant (Minimum DN100mm pipe can be entered)



The camera lens can 360 degrees endless rotate, 180 degrees flip, electric focus, and HD images. Metal lens, it has high durability and stability, and can work for a long time in harsh environments without being easily damaged. It provides an important scientific and effective basis for pipeline repair solutions.



Application

It is mainly used in municipal engineering, petrochemical and natural gas pipelines, energy and electricity, construction industry, transportation infrastructure, mine drainage systems, environmental protection and other fields.



Energy and electricity



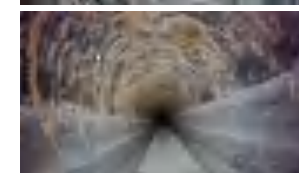
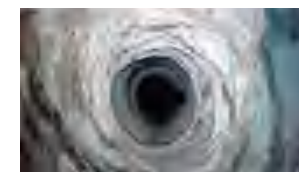
Petrochemical industry



Municipal engineering



Construction industry



GT102B

Pipeline crawler camera

- 360° rotate/220° flip
- 10 times zoom in and out
- Laser

GT102B sewer pipe inspection robot is an ultra HD front and rear dual-view pipeline video inspection equipment. It uses 10 inch controller, Tablet control is also available, equipped with auxiliary powerful lighting and count meter, and electric wire barrow. It can enter the pipeline to record video, capture defects, and record defect location information.

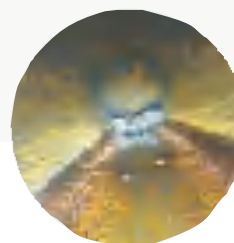


Controller or tablet optional

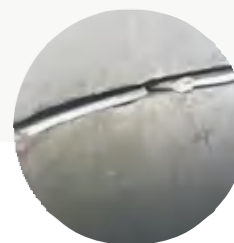


Product advantages

- **HD resolution**
Equipped with HD camera,
Industrial pixel : 2 megapixels.
- **Electric Focusing**
Pan and tilt camera, electric focusing,
10 times zoom and out.
- **All aspects inspection**
360° rotate 220° flip, no dead angle.
- **Front and rear double camera**
To prevent the crawler from encountering
obstacles in the process of winding up,
real-time reverse image is presented.
- **Laser Function**
Laser measurement to help judgement
the defect.
- **Electric wire winder, adjustable speed**
Equipped 100-150meter wire reel,
Strong heat and wear resistance.



Petrochemical pipeline
cleaning inspection



Cement pipe
crack inspection



Municipal
pipeline inspection

Application



Energy power Petrochemical



Technical
supervision



Engineering
inspection

It is suitable for the inspection of long distance pipeline with 150mm-3000mm diameter; for the inspection of cracks, corrosion, weld, foreign body and other defects inside the pipeline.

Parameter

Display dimension	10.1"	Display resolution	1920*1080
Storage capacity	32G(Max. 1 TB)	Controller size	360*310*170MM(L*W*H)
Pixel	2 megapixels	Lux.	Front 20*10000LUX
Waterproof	IP68	Inspection length	100-150m (customized)
Wheel	Optional(73mm/110mm)	Winding mode	Auto/Manual

GT104W

Pipe inspection robot

- Intelligent wireless control
- AI image recognition
- Widely used

Equipment with HD camera, 360° rotation, 220° flip, 10 times zoom function, accurate judgment pipeline conditions, such as crack, corrosion and plugging problems.

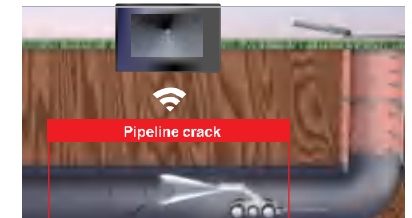


Product advantages



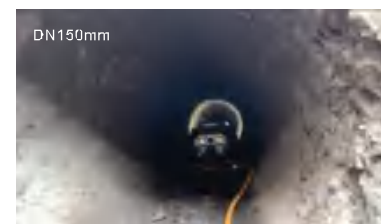
Electrical lifting camera

- 360° panoramic camera system, rotation and flip, inspect without dead angle.
- 2-4 MGPS, real-time transmission of HD images.
- 10 times zoom in and out, automatic/manual focus! Achieve the best video effect with precise zoom focusing.



Portable tablet controller

The system has built-in defect identification software, which can enter the pipeline for video recording, defect capture, and make professional inspection reports.



Small body/widely used

- Adopts modular design, 6 wheel drive, the built-in Angle sensor, Convey the state of the car body in motion in real time.
- Small size, flexible movement, adjustable crawling speed, etc., and is widely used in all kinds of hidden limited space for real-time image detection. The detection distance can reach 100-200 meters.

Application

It is suitable for pipes DN150mm and above, which is used to detect defects such as cracks, corrosion, welds, foreign bodies and blockage inside pipes.



Garden construction



Road Engineering



Water supply piping



Gas pipe



GTR150

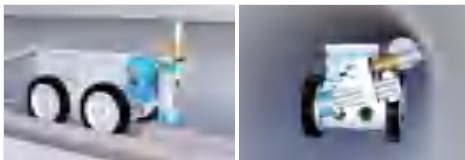
Small pipe inspection robot camera

- Quick lens replacement
- Flexible turning
- Precise thickness measurement (optional)



Product introduce

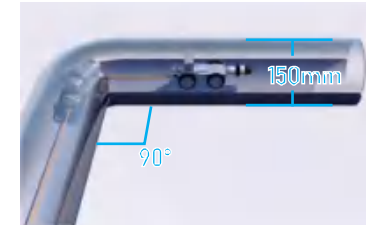
The GTR150 series is a portable pipe inspection robot designed for small pipelines. The HD camera lens can provide clear image, support 360° endless rotation and 220° flipping, and ensure all-round inspect pipeline inner. In addition to basic inspection functions, it can customized thickness measurement or salvage, providing important data for assessing the pipeline. The body is compact and can easily enter hidden and narrow spaces for defect inspection operations.



Advantage

Quickly replace cameras Adapt to different pipe diameters

- Inspectors can replace the 37mm/49mm panoramic focusing lens and adjust the lens position to suit different pipe inspect.
- The body is small and flexible, suitable DN150mm pipe inspect, can adapt to various complex pipeline environments.



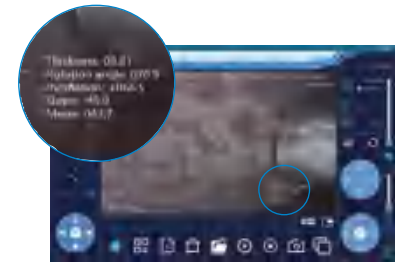
Accurate thickness measurement Expandable salvage function

- 360° all-round measurement, easily inspect complex working conditions such as straight pipe sections/elbows/tees.
- By controlling the rotation angle and position of the camera, the robot can accurately locate the point to be measured, improving the reliability of the data.



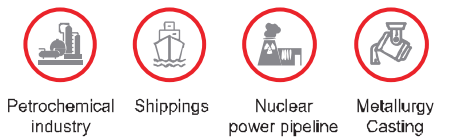
Intelligent control Efficient and portable

- Equipped with a portable tablet, it is easy to operate, and can be completed by one person, effectively improving the inspection efficiency.
- It has powerful real-time data processing capabilities and can generate inspection reports, providing comprehensive data for subsequent pipeline maintenance work.



Application

It is widely used in oil and gas pipelines, nuclear power and thermal power plants, chemical plants, refineries, pharmaceutical plants, metallurgy, ships and other fields to promptly inspect hidden dangers such as wall thickness reduction, corrosion and perforation of pipelines.



GT400

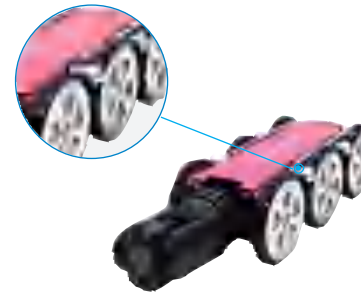
Wind-power blades inspection robot camera

- All defect analysis
- 45° climbing obstacle ability

GT400 series inspection robot is high-definition image, front and rear double camera, Match with portable tablet controller, auxiliary lighting light source and the meter counter, electrical barrow, automatic pay-off and take-up, the whole set is light and portable. It can enter the pipeline for video recording, defect capture, and record defect location information.



Advantage

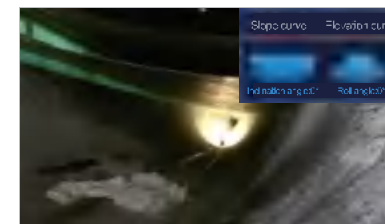
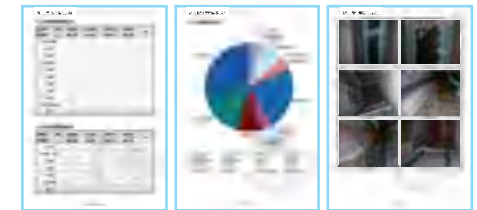


HD 360 degree inspection

- 360 degree rotate, 220 degree flip, inspect without any dead angle.
- Equipped with 10x zoom and macro focusing technology, automatic/manual focusing, Achieve the best video effect with precise zoom focusing.
- 2-4 MGPS, real-time transmission.
- Anti-rollover early warning, more efficient working Portable tablet control terminal.

Portable tablet control terminal

- Wireless digital signal transmission, operation without delay, strong anti-interference.
- Built-in defect interpretation software, and real-time generation of inspection report. Detailed analysis of internal test data, support online editing.



Super obstacle & climbing

Modular design, 6-wheel drive, climbing Angle up to 45 degrees, Built-in tilt sensor to convey the state of the vehicle body in real time. The whole machine small, portable, and adjustable climbing speed, widely used in a variety of hidden and limited space, internal real time image detection operations.

Application

Suitable for 200mm~5000mm pipe diameter. Defects such as cracks, corrosion, welds, foreign matter and blockage in the pipeline.



Wind turbine blade



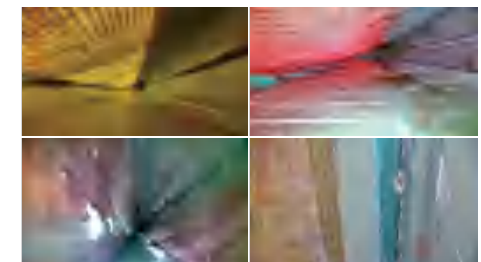
Petrochemical industry



Nuclear power pipeline



Engineering inspection



GT-260 Series

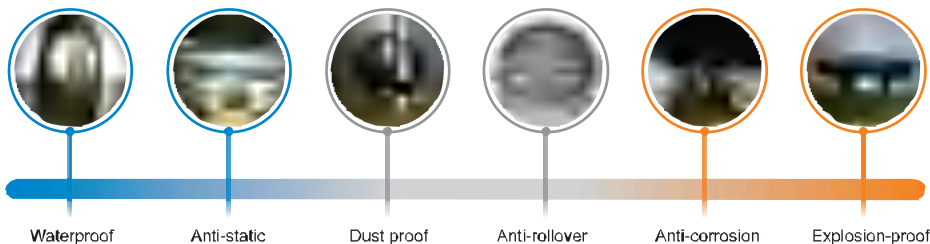
Explosion-proof inspection robot camera

- China explosion-proof certification
- One-click scan
- Easy Operation

GT-260 series industrial explosion-proof inspection robot camera system makes comprehensive internal video inspection in a series of hazardous and corrosive industry conditions, such as atmospheric tank trucks, pressurized tank trucks, hazardous chemical containers, gas, petrochemicals, etc.



Six defense design



Advantage

According to the industry conditions, you can choose to install a lifting camera pan/HD panoramic lens, and use the one-button auto scanning function to shoot and transmit HD images in real time, define defects in time, and use image data for filing, making tank truck inspection safer and more efficient.

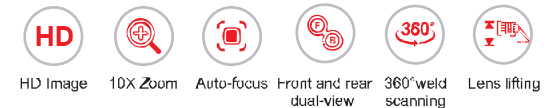


Suitable pipe diameter:
above 115mm



Zone I working environment / Defect location

- 2MGP industrial-grade ultra-HD pixels.
- 10 Times Zoom and macro focusing, auto focusing.
- Front and rear dual-view, free forward and backward in the tank truck, present the reversing image in real time.
- Continuous observation of welds and auto scanning of wave-breaking plate welds.
- Lens lifting and the compact body make it easy to pass through the wave-breaking board.
- Inspection length: 100M-Customized.



Zone II working environment / Laser measurement

- 360° rotate 220° flip, one-click auto scanning and one-click reset.
- Flexible multi-level light source, clearer in large spaces.
- 10x zoom, optical focus, auto micro focus adjustment.
- Laser measurement assist in determining the size of defects.
- Unique wheel structure, easy and flexible to move forward, backward and turn, and adjustable speed.



Suitable pipe diameter:
above 140mm



GTDR-200

Vertical / Horizontal Pipe Inspection Robotic Camera

- Industrial megapixels
- Strong anti-interference
- Pressure inspection(optional)



Product introduce

The GTDR-200 series crawling robot is composed of an intelligent tablet, retractable variable diameter crawler, HD panoramic visual sensor, and flexible cable. Through the panoramic lens, the inspection image and data are transmitted to the control in real time. It is suitable for more than 100mm pipeline working condition inspect, and timely records and archives defects such as cracks, corrosion, blockage, welds, foreign matter, etc. inside the working condition. Generate inspection reports in real time.

Diameter can be customized to fit a variety of pipes.



Advantage

• Electric opening and closing Pipe diameter self-adaptation function

Multi-joint robotic arm design, Automatically adapt size according to the pipe diameter, Enable precise movement and positioning. This design make the robot to easily pass through curved pipes and welds without getting stuck or falling due to shape restrictions.

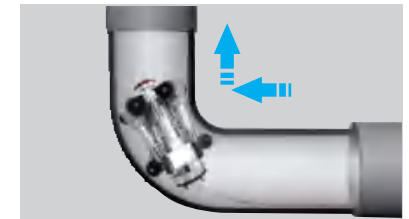


• Wide-angle direct view/HD images

The wide-angle direct-view enables the camera to capture wider field view. The high-brightness lighting source can clearly inspect pipeline inner defects. The lens adopts 2 million industrial pixels, and intelligent key function operation.

• Vertical/Horizontal/turn inspection no limited

The robot has excellent vertical/curving inspection capabilities and can quickly and accurately obtain image information inside the pipeline even in vertical sections or hard-to-reach turns. (Pressure inspection robot can be optional according to demand.)



Application

Widely used in petrochemical, gas, nuclear power, offshore platforms, shipbuilding, metallurgy, food and medicine, military industry, water supply network, heating network, gas and other fields.



Petrochemical



Gas pipe



Nuclear power



Shipbuilding

GT220

Portable Push Rod Camera

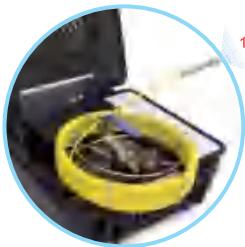
Multifunction

- Compatible with different cameras
- Standard Length 20m(20-120m)
- Easy to operation

Featured

- 360 ° rotate without dead angle
- Wirelss keyboard/recording function
- Meter counter device
- Multiple language

All in one pipe camera
High compatibility
Waterproof IP68



Hand held cable reel /
Wheel push-pull cable reel



10.1" portable display
Detachable sun shade
Avoid the screen reflections.



Production Introduction

GT220 series push rod camera is a box type portable HD pipeline inspection equipment for sewer pipe, drain pipe, container internal and boiler, etc. inspection. All the accessories are assembled in one carrying box, suitable for outdoor complex environment detection operations. Multifunctional, supports different diameters of camera, take photo and video, take quick snap and mark the location information of defects in the pipeline. (Inspection range : 18~400mm)

Parameter

Display dimension	10.1"	Display resolution	1920*1080
Storage capacity	1TB(max)	Box size	492*446*200mm
Camera	18mm/21mm/37mm/49mm/51mm	Resolution	Megapixel
Length	20-120m	Customized	512hz

GT106

HD pipe periscope

- Electronic zoom
- Optical zoom
- Laser measurement

GT106 Wireless HD Pipeline Periscope via telescopic rod,Take the HD camera with its own high light source and put it inside the pipe or industrial container, the lens can be focusing, zoom to inspect hidden space and high-risk conditions with recording.



Technology Advantage



Flexible Inspection Rod

1-6m length

Plug-in lithium battery

Long working time, can be charged quickly and change at any time.

Adjustable Lightness

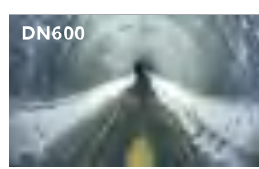
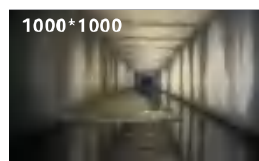
Support electric one key defogging function.

HD Rotate Camera

2~4 megapixels.With 30X zoom function.

Laser measurement

Able to judge the location of defects.



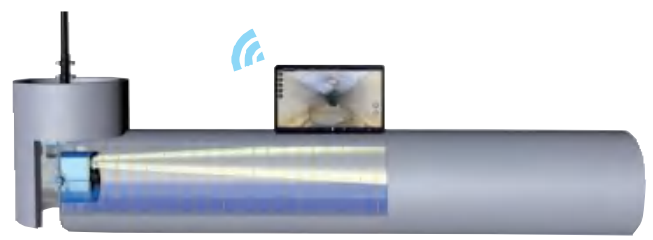
Lens parameter



Lens size	138mm*100mm*187mm(L*W*H)
Lens pixel	2~4 megapixels
Number of lights	High beams(2 sets), Low beams(4 sets)
Lighting brightness	200000Lux or more
lens function	30X zoom, autofocus
Pitch angle	Maximum 45 °
Waterproof	IP68

Application

Mainly used in municipal (industrial) drainage pipes, water pipe, integrated pipe,Tunnel Portable and easy to install.



GM320

Multifunctional HD Pipe Inspection Endoscope

- High Compatibility
- 360 degree no dead Angle inspection
- Portable

GM320 multifunctional HD pipe inspection endoscope series adopt a 360° full-view camera lens, a HD light source, a 7" touch screen and a hand telescopic cable reel (optional length). In order to adapt to different diameters of the pipe, it can match with a wide range of diameter lenses, achieve the perfect balance between versatility, imaging power and ease of use.



Application

Suitable for 7-800mm diameter industrial pipelines or complex and narrow equipment internal space, for inspection of corrosion, cracks, welds, foreign matter, wear, and internal processing of parts. It has been widely used in energy and power, petrochemical, production and manufacturing, aerospace and military industries.



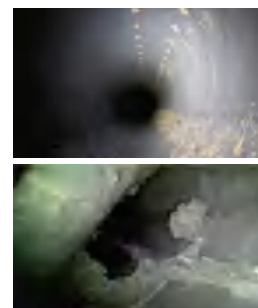
Portable Multifunctional touch host



- 7 inch IPS full-view HD touch screen.
- Defect measurement, Real time data displayed and recorded in image/video.
- Support image zooming/rotation, multi-touch pinch gesture zooming, easy operation.
- Doodle/tag/edit pictures for the operator to organize later.
- Wifi module built-in, networkable, remote control.
- Work continuously for more than 6 hours when fully charged.



Suitable for different pipe diameters



- 37mm full-view lens, 360° rotate 220° flip.
- 16mm Wide angle direct lens, Spring-loaded lens, easily pass.
- 6mm lens adopts an electric control joystick, well control, small and flexible.
- LED light source, adjustable light, clear images under different lighting conditions.
- Cable length optional, meet the inspection needs of large/small pipelines or complex structures.
- IP68 waterproof, can withstand 10 meters of water depth. (Hook camera IP67 waterproof).





GT230

Pipe inspection camera

Wide-angle front-viewing / Handheld

Product introduction

360° camera can inspect inner pipe without dead angle, 5.5 smaller camera can be go into the thinner pipe,easy fo all kinds of complex conditions.



Product Feature



Easy Operation

10.1 inch LCD screen, video and photo together, offer detailed material evidence in time for pipe ,container internal judgment.



Multifunction

Strong compatibility, match with 5.5/8/16/21/28/37/51/90mm camera,Fishing Pliers optional.



HD Full View

360° rotate endless, 220°flip, inspection without any dead angle. Megapixel, HD image.



Focusing function

Electric focusing, make more clear image of inspection.



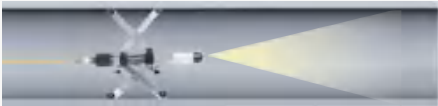
Lighting system

LED highlighting, the brightness can be adjusted.



Cable reel Optional

Portable Handheld Cable reel And Push rod cable reel is optional according to the inspection distance with meter counter.



Centralizer(Optional)

Match the centralizer, Keep the camera in the center all the time.



Parameter

Display dimension	10.1"	Display resolution	1920*1080
Storage capacity	1TB(max)	Display character	time/date/electricity/meter
Camera	5.5/16/21/37/51/75/90(mm)	Resolution	Megapixel
Coil length	20-120m	Pipe diameter	7~800mm

GT-PTZ

Portable HD Pipe inspection camera

- Multifunction
- Panoramic inspection
- Efficient and portable

Portable controller

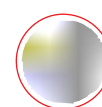
- 7 Inch HD Screen, ensuring clear images.
- Multiple lenses available, adapts to different pipeline inspection needs.
- Supports real-time capture images and videos, making it easy for users to record and review the inspection process.
- Folded sunshade design, self-adjusting angle, effectively blocking sunlight.
- Equipped with a rechargeable battery, the battery life can reach 6-8 hours.
- It supports massive information storage and can transfer inspect pictures or videos to computer or other device, For further analysis and processing.



49mm Panoramic
Metal Lens



21mm front-view
wide angle lens



8mm front-view
all-in-one lens

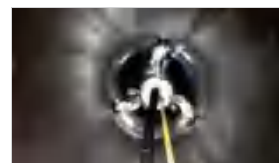
Be used for different pipe diameter

The lens can be quickly replaced to meet the different pipe diameters inspect needs.

Lens pixels: more than 2.1 million industrial-grade pixels.

Suitable pipe diameter: DN10mm~800mm.

360 degree panoramic inspection



- The electric focus function makes the image clearer and captures the working conditions details.
- Adjustable LED high light ensure clear images even in low-light environments.
- IP68 Waterproof, can work stably in wet or underwater environment.
- According to the working conditions, a centralizer can be equipped to ensure inspection task.

Accurately locate the fault point




- Display the cable length in real time to determine defects location.
- The cameras are equipped with meter reset function.
- Using GFRP hard inspect line, waterproof, oil-proof and wear-resistant.
- The push rod camera take up and pay off smoothly.
- Can choose handheld telescopic wire reel (within 30 meters)/push-pull telescopic wire reel (30-120 meters).
- Other lengths can be customized.



GT22SV




Handheld pipe inspection camera

Wide Angle view/All in one pipe camera



Strong compatibility

Match with different camera 21mm/16mm/8mm, spring body design , can be turn 90° bend in pipe.



21mm 16mm 8mm

7 inch monitor

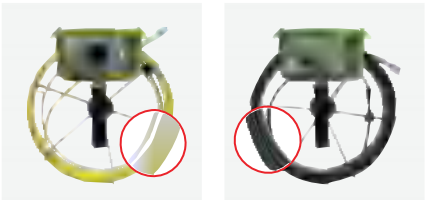
7" color LCD screen, Resolution: 1280*600


Meter counter

Equipped with meter counter device, it can effectively assist to judge the location of defects.


Cable material

- GRFP wire with strong wear and corrosion resistance, easy to operation.
- Optional hand-held steel strand, anti - fall and wear - resistant, full toughness, easy to turn 90 degrees.





It is suitable for long distance pipes.



It is suitable for pipes with more bends.

Parameter

Dia.	Φ21	Φ16	Φ8
Pixel	megapixel	megapixel	480000
View angle	120°	120°	100°
Lux.	10000LUX	10000LUX	10000LUX
Length	20~30m	20~30m	20~30m
Inspection range	23~200mm	18~200mm	10~50mm



GT160

Industrial Videoscope

HD/Portable/Anti-Corrosion and wear



Application

Pipes diameter from 4mm-200mm. It can inspect all kinds of industrial pipeline or small equipment space for comprehensive inspection, such as corrosion,foreign body, weld, sunder, parts wear and internal processing, etc.

Parameter

Dia.	Φ2.2	Φ2.8	Φ3.8	Φ6.0	Φ8.0
Pixel	300000	480000/megapixel	480000	480000/megapixel	480000
Viewing Direction	Front view	Front view/Sideview	Front view / Sideview / Front&side view, dual lens	Front view / Sideview / Front&side view, dual lens	Front view / Sideview / Front&side view, dual lens
View angle	120°	120°	90°/120°	90°/120°	90°/120°
Light source	20000LUX	20000LUX	20000LUX	100000LUX	100000LUX
Length	1.0~2.0m (Customized)	1.0~3.0m (Customized)	1.0~5.0m (Customized)	1.0~3.0m (Customized)	1.0~10m (Customized)



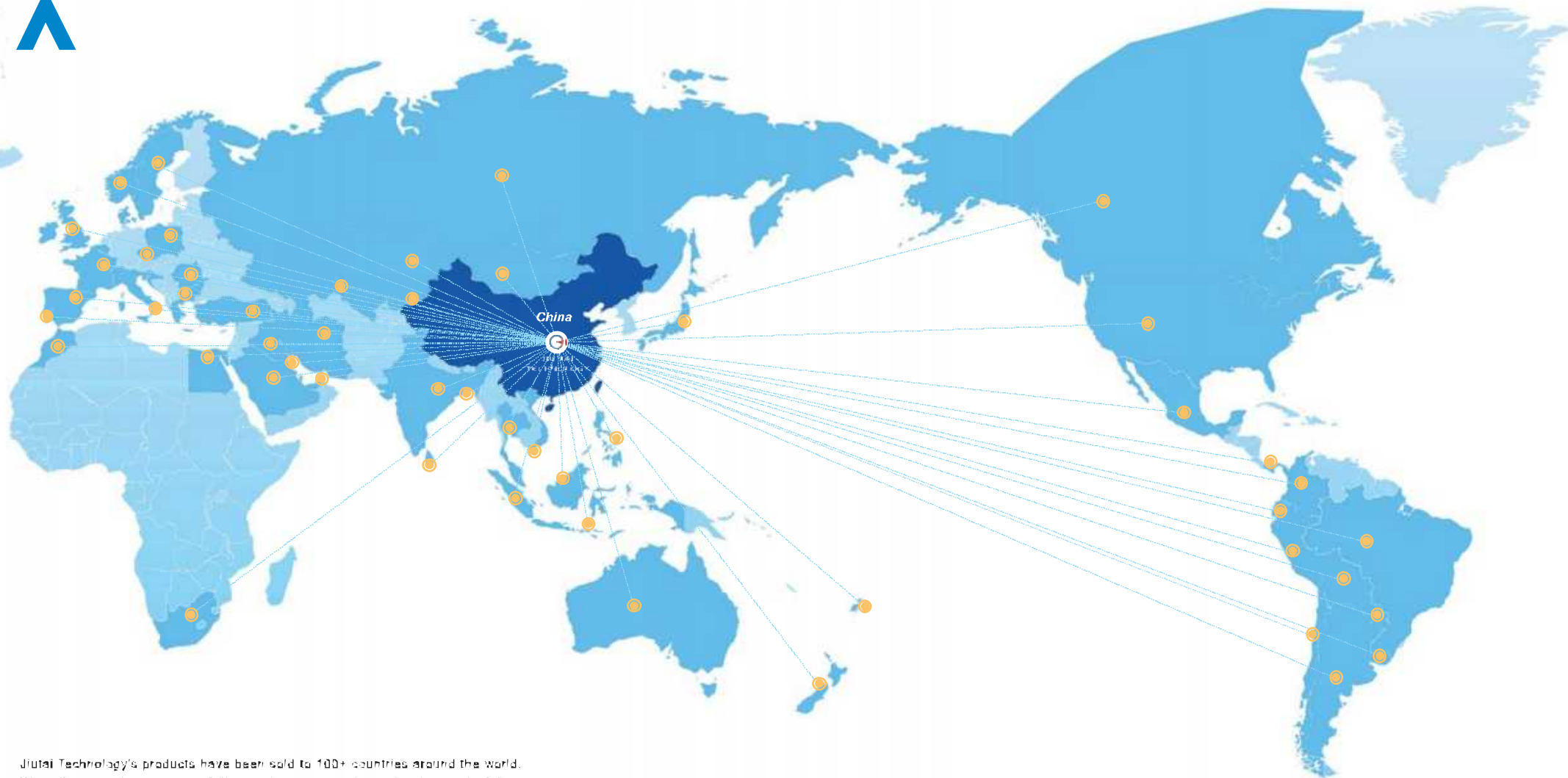
BUSINESS PARTNER

Innovation • cooperation • win-win and gratitude

From using industry-leading technology to implementing strict quality inspections, we require professionalism and excellence in every link to fully meet customer' various specific needs. With the advantages of durable and reliable products, we have established long-term and stable cooperative relationships with many customers.



SALES NETWORK



Jiutai Technology's products have been sold to 100+ countries around the world. We adhere to the concept of "innovation, cooperation, win-win, gratitude" to provide customers with perfect solutions. On the global international stage, we always using innovation as the sail and quality as the rudder to provide global customers and partners with perfect products and complete services!